



KAWEEI[®]

Wire Harness Cable Assembly

Quality Assurance

Rapid Turnaround

Introduction

Focus on customed wire harness cable assembly & connector development as well as turnkey box building



Found in
2013



Located
Dong Guan
China



Members
80



Certificate



- Kaweei is found in 2013, a High-End Tech Enterprise.
- Head Quarter Located in Dong Guan China with ~53,819 Sq/ft.
- Has sales office in Silicon Valley USA, Singapore, Tai Wan , Vietnam and Spain.
- ISO-9001, IATF-16949, UL as well as ISO-13485 certification.

Main Product Categories:

- Waterproof cable & Connector
- Medical Cable
- Tele-Communication Cable(HDMI&DVI&DP)
- Automative Electrical Equipment Wire Harness.
- I/O Data Transfer Cable
- Vehicle Wire Harness.

Our Service Including:

- ✓ Small-medium sized
- ✓ NPI Quick Turn Building
- ✓ Sourcing Activity
- ✓ Turnkey Box Building

● History

2013

Founded

2019

Expand to 4000sq/ft
WKK Approved Vendor

2020

UL Certified

2021

ISO 9001:2015 Certified

2022

- Apply for IATF16949 Certification
- 8 National New-Utility Model Patents
- Full Tracking System(MES) Introduce

2023

- IATF-16949 Certified
- 2023 Reward
“Excellent Service Vendor”
of US Fortune-500s Customers

2024

ISO-13485
Medical device
Manufacturing

2025

New Production
Plant



Factory Tour Route

Manufacturing Capability

- ◆ Wire Cut & Wire Strip
- ◆ Wire Crimp Range from 8 To 32 AWG
- ◆ Connector Housing Assembly
- ◆ Soldering-IPC/WHMA-A620E Compliance
- ◆ Assistant jig & Fixture Design
- ◆ Turnkey Box Building(PCBA & Enclosure)



- ◆ Automation Crimp Termination
- ◆ Automatic Wire Twisting
- ◆ Ultrasonic Welding
- ◆ Plastic Injection
- ◆ Metal Stamping

Automatic Cutting



+/-0.01mm
High Accuracy
~2500pcs/Hour
High Capacity
High Efficiency and Low Error



Low-pressure Injection Molding

1 ~ 5T
Clamping force
1 ~ 500g
Injection Volume
5.0 ~ 7.0 kgf/cm²
Injection Pressure
200 ~ 300°C
Temperature
Easy Operation and Programmable

Automatic of Wire Harness



+/-1mm
High Accuracy
~1500pcs/Hour
High Capacity
Realtime Gravity monitoring



Ultrasonic welding machine

15 ~ 20KHz
Working Frequency
2600 ~ 4200W
Working Power
Nylon, Acrylic, PV/PC, ABS
Safety and Stable



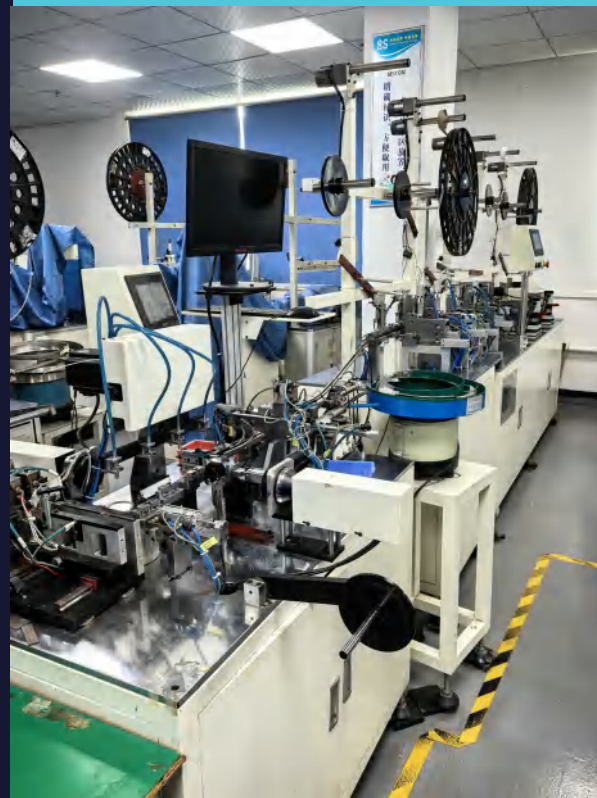


Assembly & Inspection (Terminals / Housing)

Injection Molding



Assembly & Inspection (Terminals / Housing)



Automatic assembly

• Material Category



Wire & Cable

Wire:

- UL 1007, 2464, 1581,2095,3135,3266....
- Gauge(AWG): 8,12, 16, 22, 24, 26, 32
- Voltage(V): 250,600,1000,1500.....
- Insulation: PVC ,XLPE, Silicone, PTFE,
- Resistance: UV, Oil, EMI, Chemical....

Cable:

- Flat Cable(FFC、 FPC、 IDC..)
 - LVDS Cable
 - HDMI Cable
 - USB Cable
 - Video Cable
- Gauge(AWG): 10,11,12,13,14,18....
- Conductor Configuration: 3,4 5,7,6...
- Conduct Material: Copper, Cooper Alloy, Copper/Aluminum...
- Voltage(V): 300,600,1000,1400,1700...
- Insulation: PVC, MPPE ,TPE ,PUR...
- Resistance: EMI, Flame, Moisture,Chemical...



Connector

- I/O Connector(RJ45、 D-Sub..)
- Wafer Connector(2pin~10pin)
- FPC/FFC Connector(0.3mm~1.25mm)
- IDC Connector(LC、 MPO、 VSFF)
- RAST IDC Connector(M7289、 M9409..)
- Backplane Connector(DIN 41612)
- Terminal (Ring、 Spade..)
- Circular Connectors(Accessories、 Adapters..)
- Sleeve Connectors(Power Connectors, Audio Connectors..)
- Rectangular Connectors(Headers, Sockets..)
- Contacts(Pogo Pins and Pressure..)
- USB、 DVI、 HDMI Connectors



Auxiliary Material

- Solid Tubes, Heat Shrinkable Sleeves, Double-Walled Tubes
- Label
- Grommets
- Magnetic rings
- E-Chains
- Cable Ties
- Mesh Tube, Protective hoses
- Fuse
- Diode
- Switch
- LED Strip
- Conduits, Trunking
- Insulating Material(PVC、 PE)
- Adhesive(PVC /Fabric /Cotton)
- Flame retardant tape
- Housing, Sheath



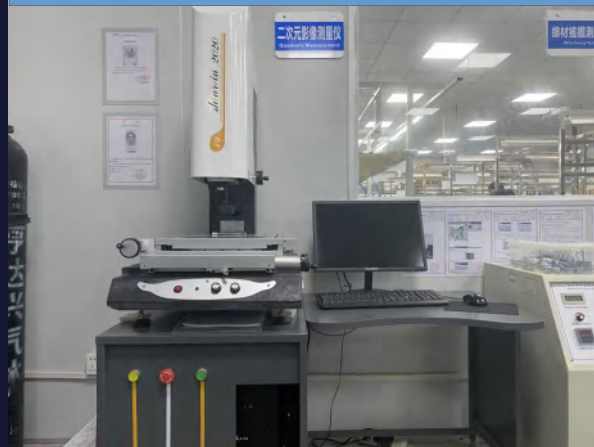
AVL

- Molex
- TE-Connectivity
- Amphenol
- DigiKey
- Blden Wire & Cable
- HARTING
- Littlefuse
- 3M
- HellermannTyton
- Weidmuller
- SIEMENS
- Hirose Connector
- Harwin
- JST

RoHS 2.0 Detection



Quadratic Measurement



Cable Vibration



Cut & Grinding



Salty Spray



Connector Mating Pull Force

Direct Current
Micro-Ohmmeter



Traceable Conductivity



Cable Conductivity



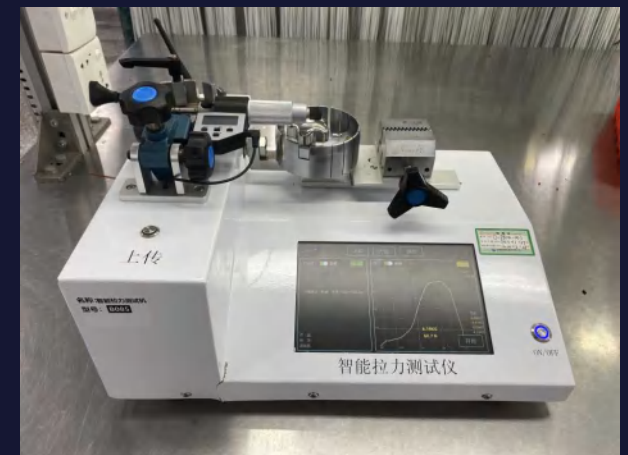
Crimp Pull Force



Alcohol Rubber Friction



Intelligent Pull Force



Electric Magnetic Vibration



Wire Serial CCD



Air Leakage
Waterproof



XRF RoHS



Current Payload



Hi-Pot

Electrical Equipment

High temperature & durable & Anti-interference



Tel-Communication Equipment

High Speed Transmission & Low Loss & EMI



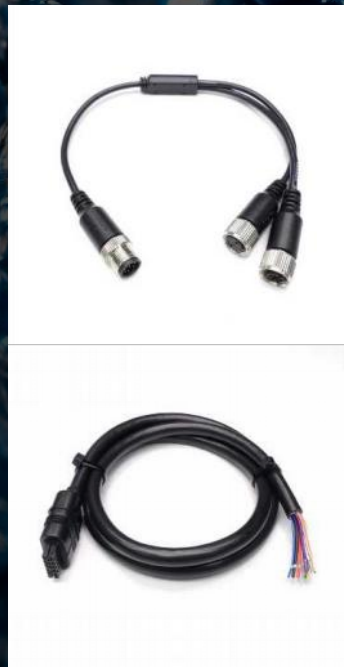
Vehicle Wire

Impact-resistant & Oil resistance & High Durability



Waterproof Cable

Outdoor IP67 & IP68



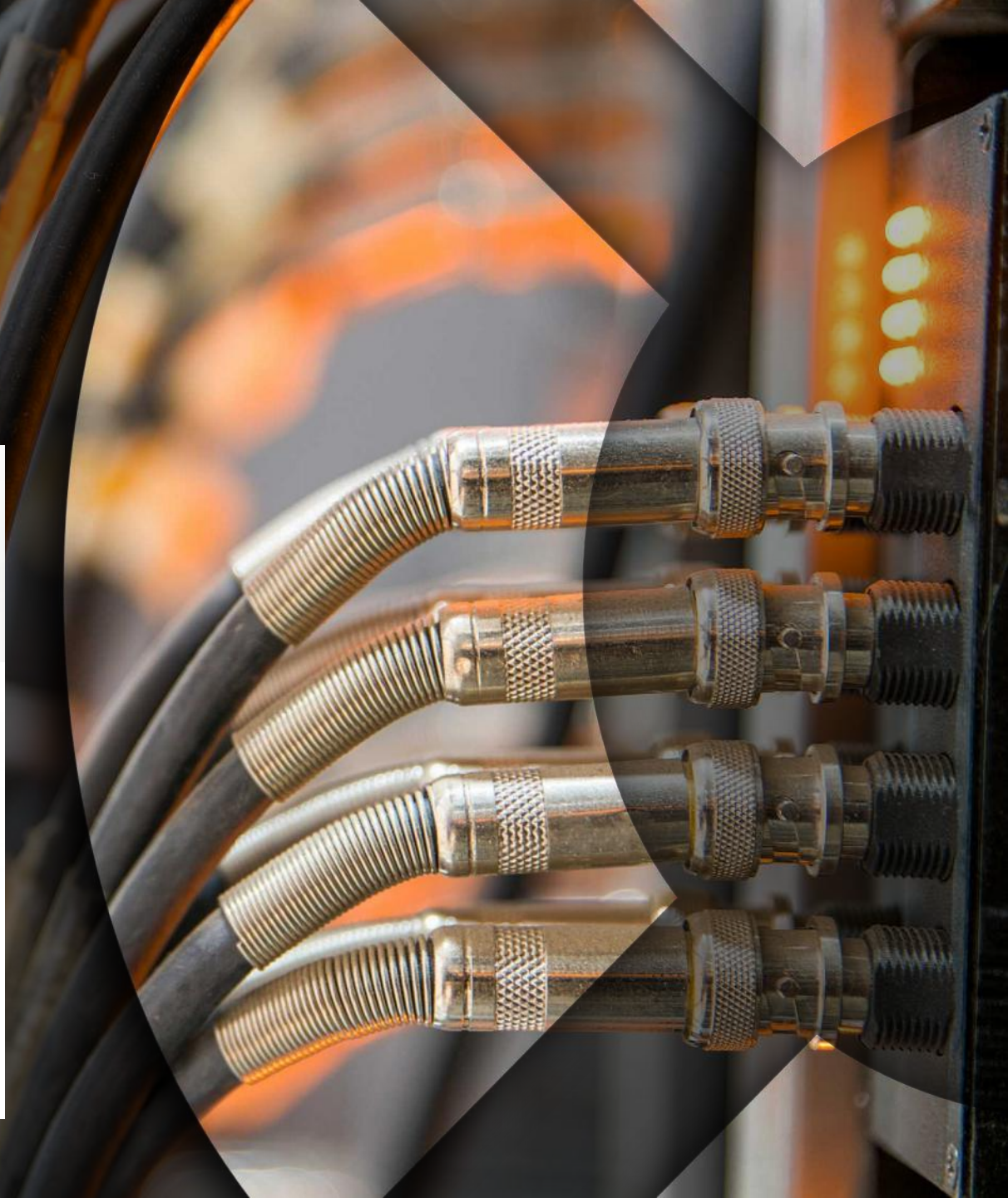
Industrial Machine Cable

Inflammable & Insulation



Connector

Multi-sizes & Waterproof

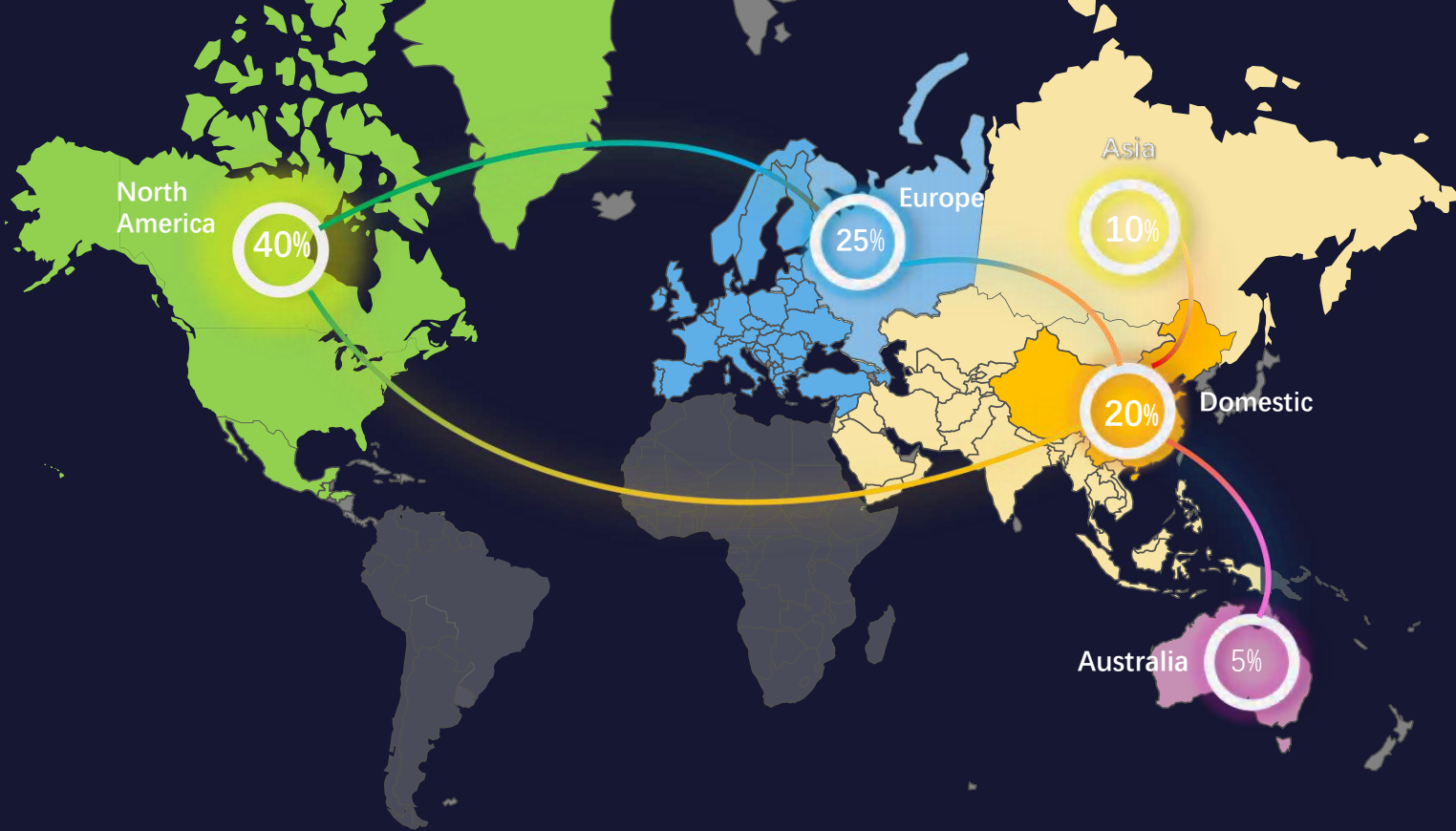


Financial

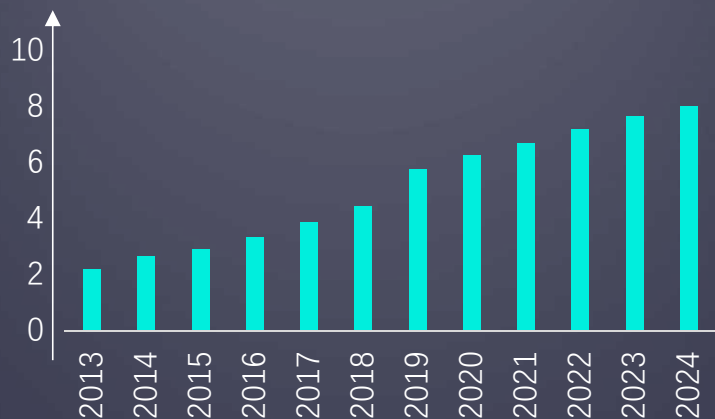


Target

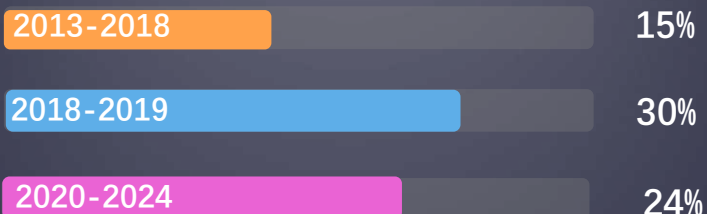
2025 Growth Rate:



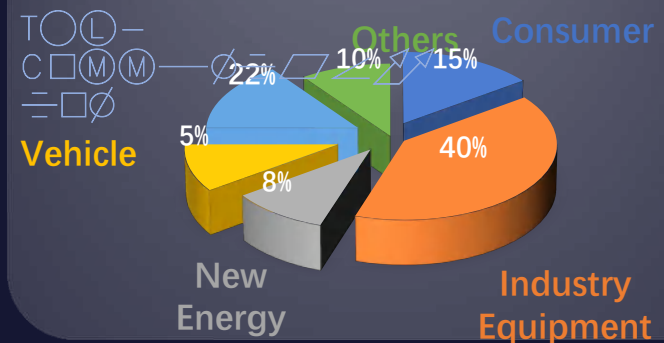
Sales Revenue \$US Million



Annual Growth Rate



INDUSTRY



Company Welfare

